

VSX J133005.0+471011

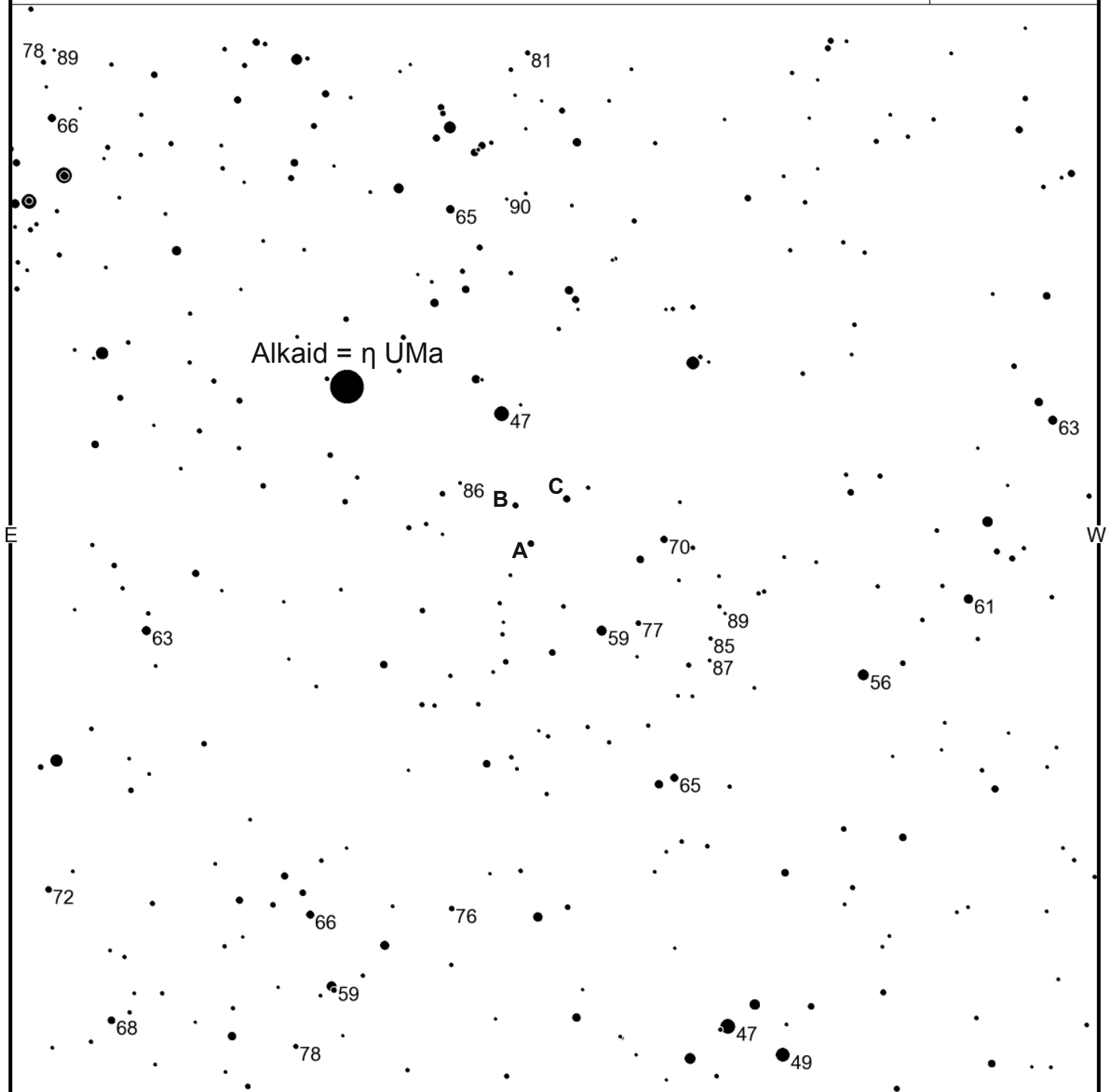
N

AAVSO
Chart

Magn: 13.7 - 0.0
Period:
Type: SN
Spec:

sn 2011dh
(2000) 13:30:5.08 +47:10:11.2

4936bkuq



FOV = 15.0°

Please use the photometry table for CCD observations.

S

VSX J133005.0+471011

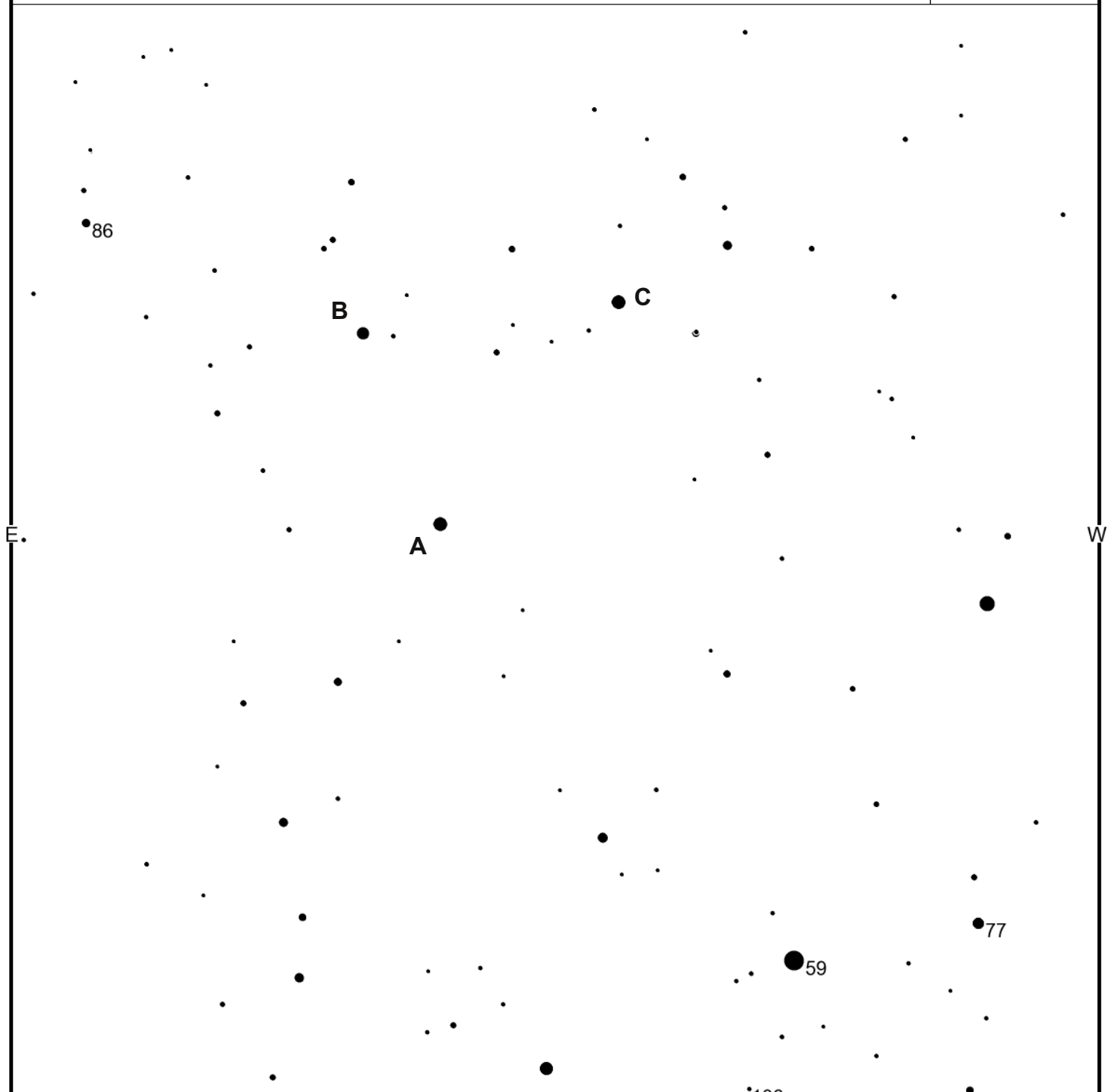
N

AAVSO
Chart

Magn: 13.7 - 0.0
Period:
Type: SN
Spec:

sn 2011dh
(2000) 13:30:5.08 +47:10:11.2

4936bkuo



FOV = 3.0°

Please use the photometry table for CCD observations.

S

VSX J133005.0+471011

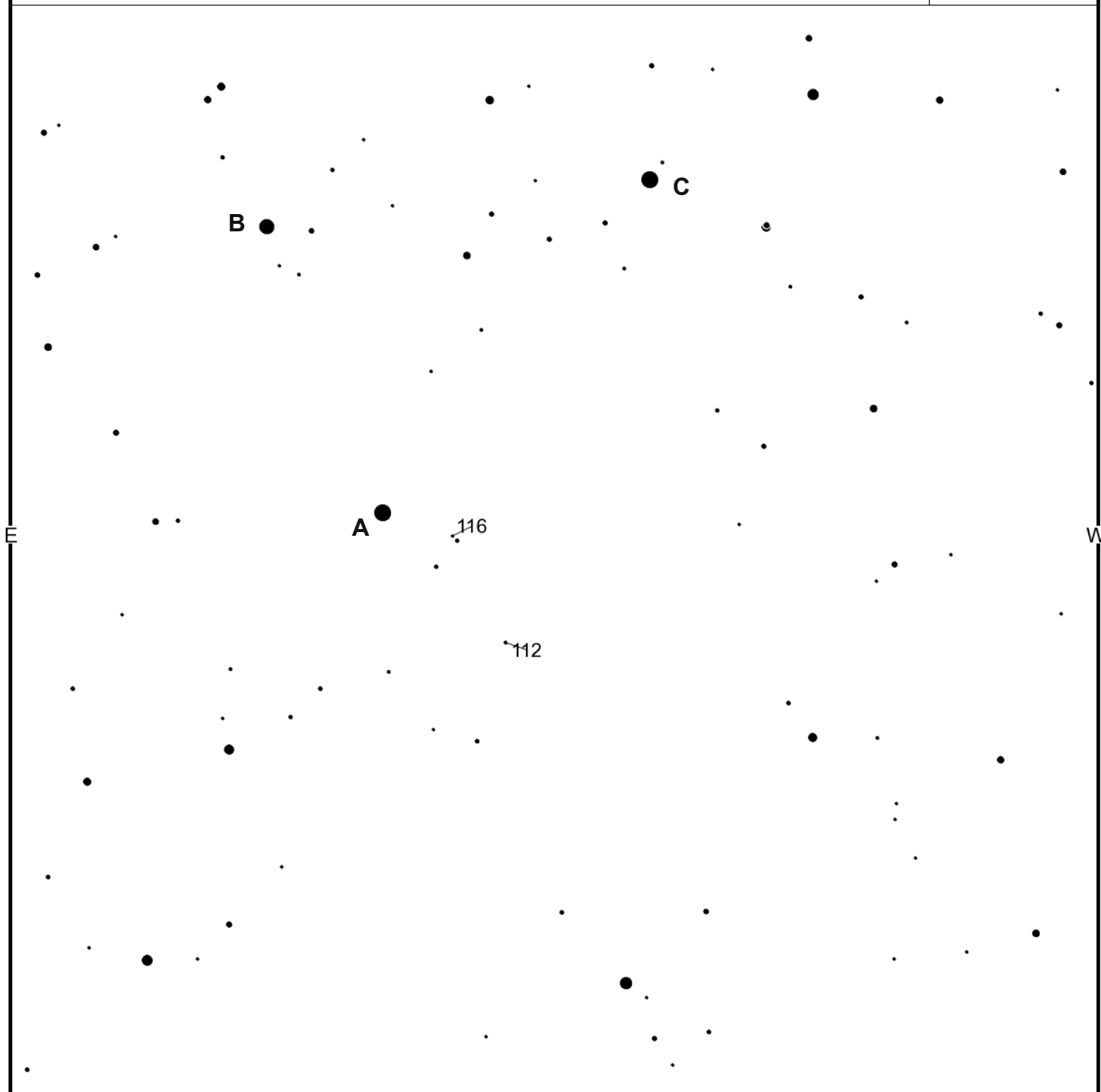
N

AAVSO
Chart

Magn: 13.7 - 0.0
Period:
Type: SN
Spec:

sn 2011dh
(2000) 13:30:5.08 +47:10:11.2

4936bkup



FOV = 2.0°

Please use the photometry table for CCD observations.

<http://www.aavso.org/vsp/>

Copyright © 2011 AAVSO

S

VSX J133005.0+471011

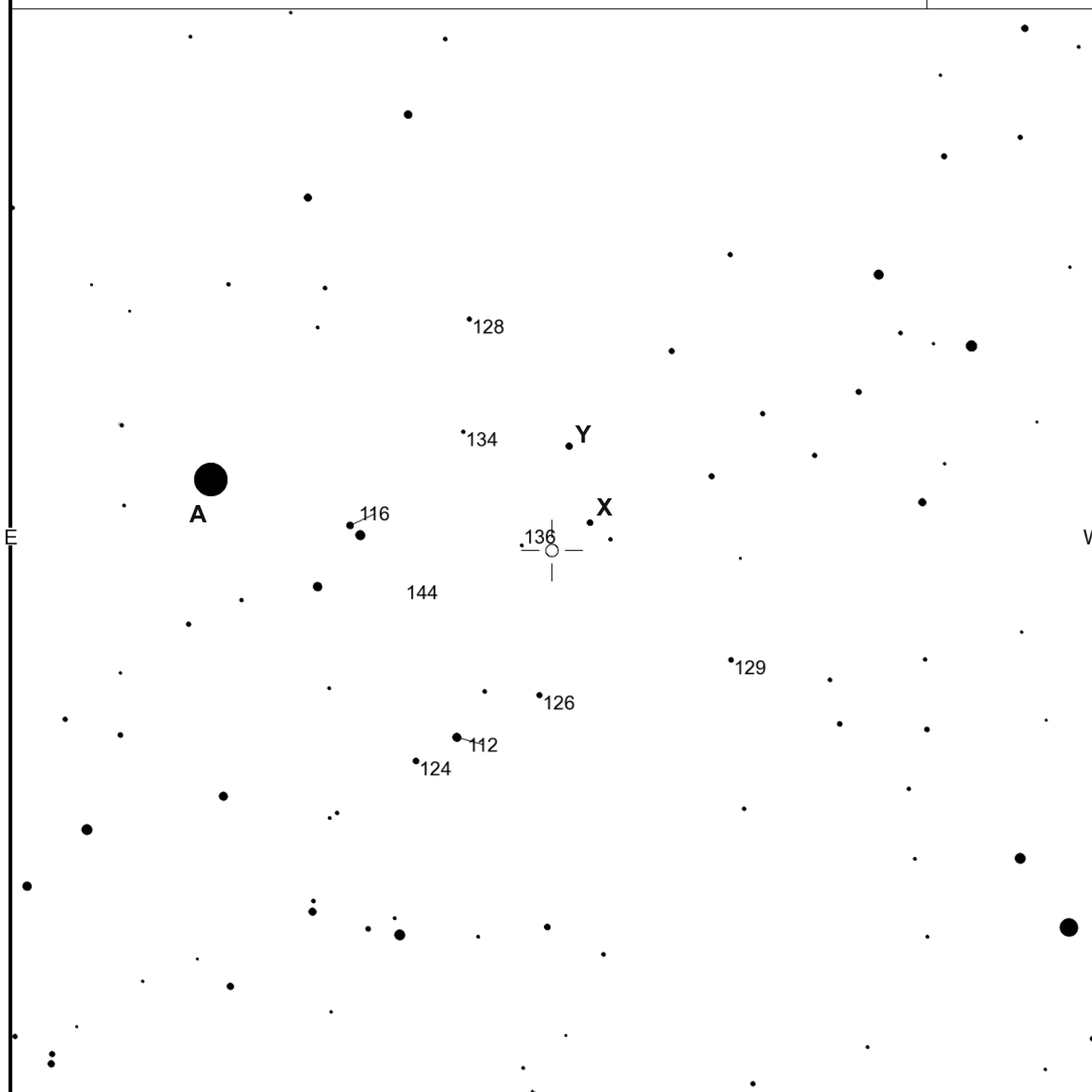
N

AAVSO
Chart

Magn: 13.7 - 0.0
Period:
Type: SN
Spec:

SN 2011DH
(2000) 13:30:5.08 +47:10:11.2

4936bjdt



FOV = 1.0°

Please use the photometry table for CCD observations.

"Star" labeled X is the core of M51; "star" Y is the core of NGC5195 (M51's companion)

<http://www.aavso.org/vsp/>

Copyright © 2011 AAVSO

S