

PTF11kly

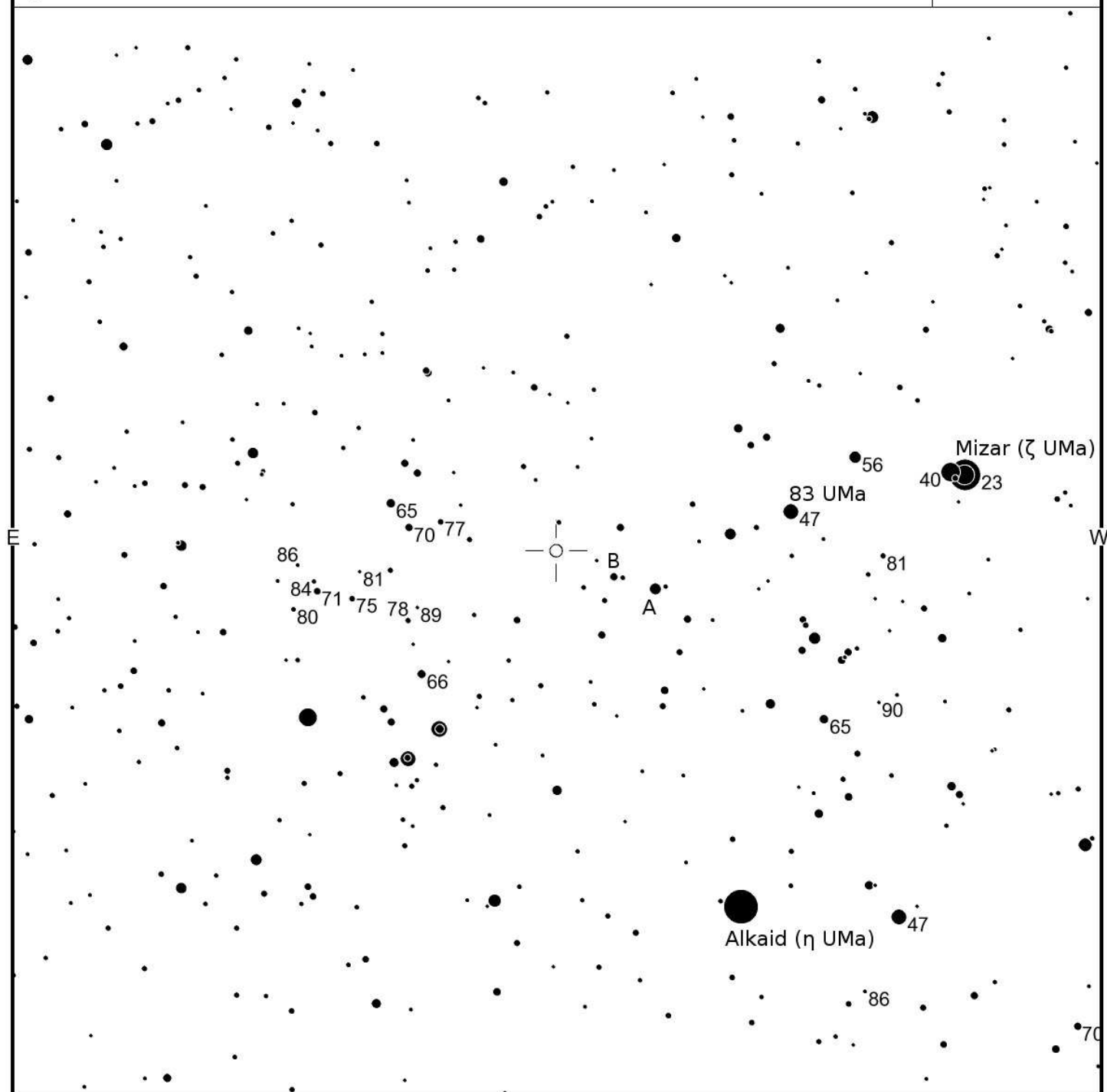
Magn: 0.0 - 0.0  
Period:  
Type: SNIa  
Spec:

# Supernova in M-101

(2000) 14:03:5.81 +54:16:25.4

AAVSO  
Chart

5252aja



FOV = 15.0°

Please use the photometry table for CCD observations.

<http://www.aavso.org/vsp/>

Copyright © 2011 AAVSO

PTF11kly

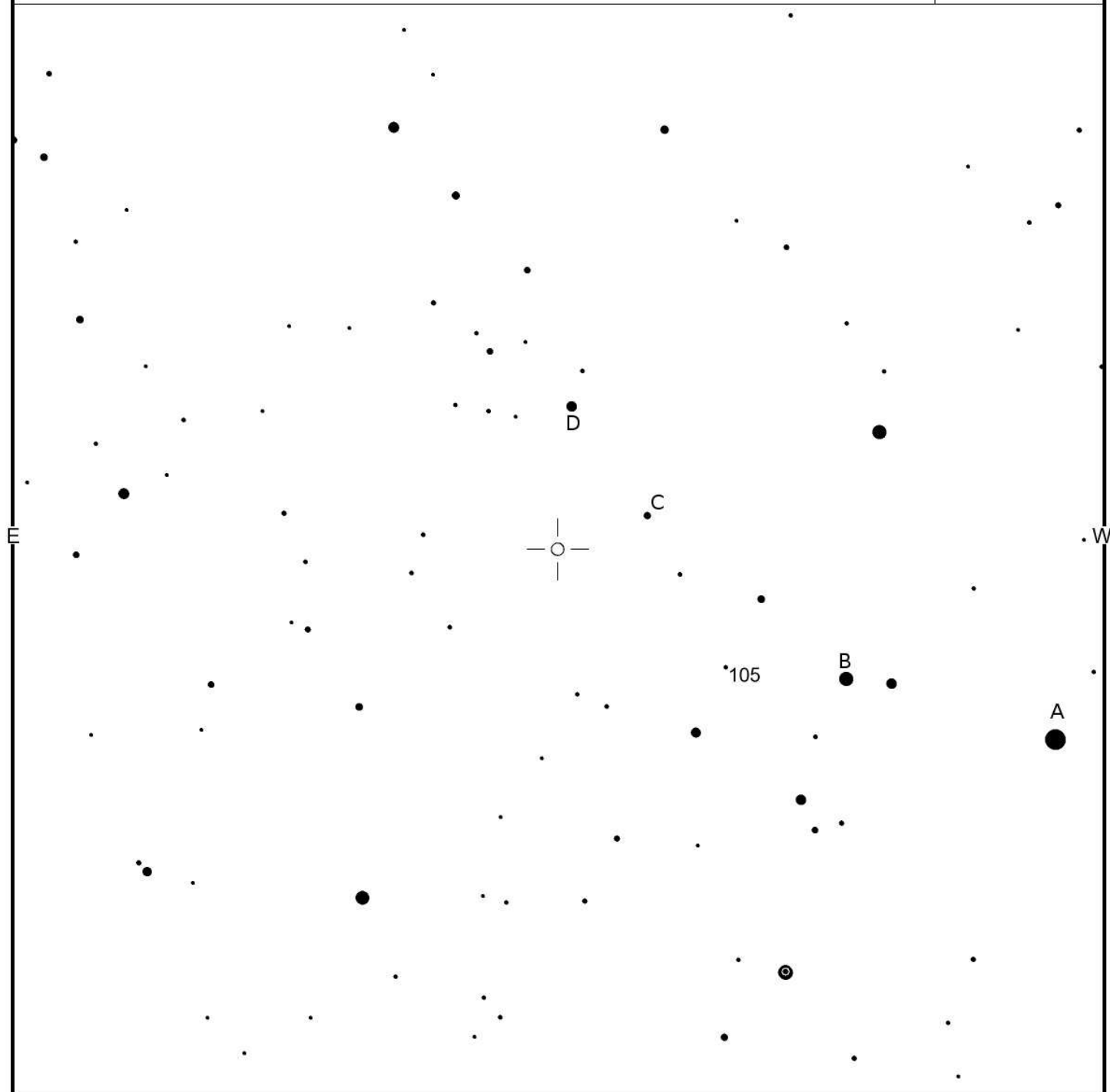
Magn: 0.0 - 0.0  
Period:  
Type: SNIa  
Spec:

# Supernova in M-101

(2000) 14:03:5.81 +54:16:25.4

AAVSO  
Chart

5252ajd



FOV = 3.0°

Please use the photometry table for CCD observations.

<http://www.aavso.org/vsp/>

Copyright © 2011 AAVSO

PTF11kly

Magn: 0.0 - 0.0  
Period:  
Type: SNIa  
Spec:

# Supernova in M-101

(2000) 14:03:5.81 +54:16:25.4

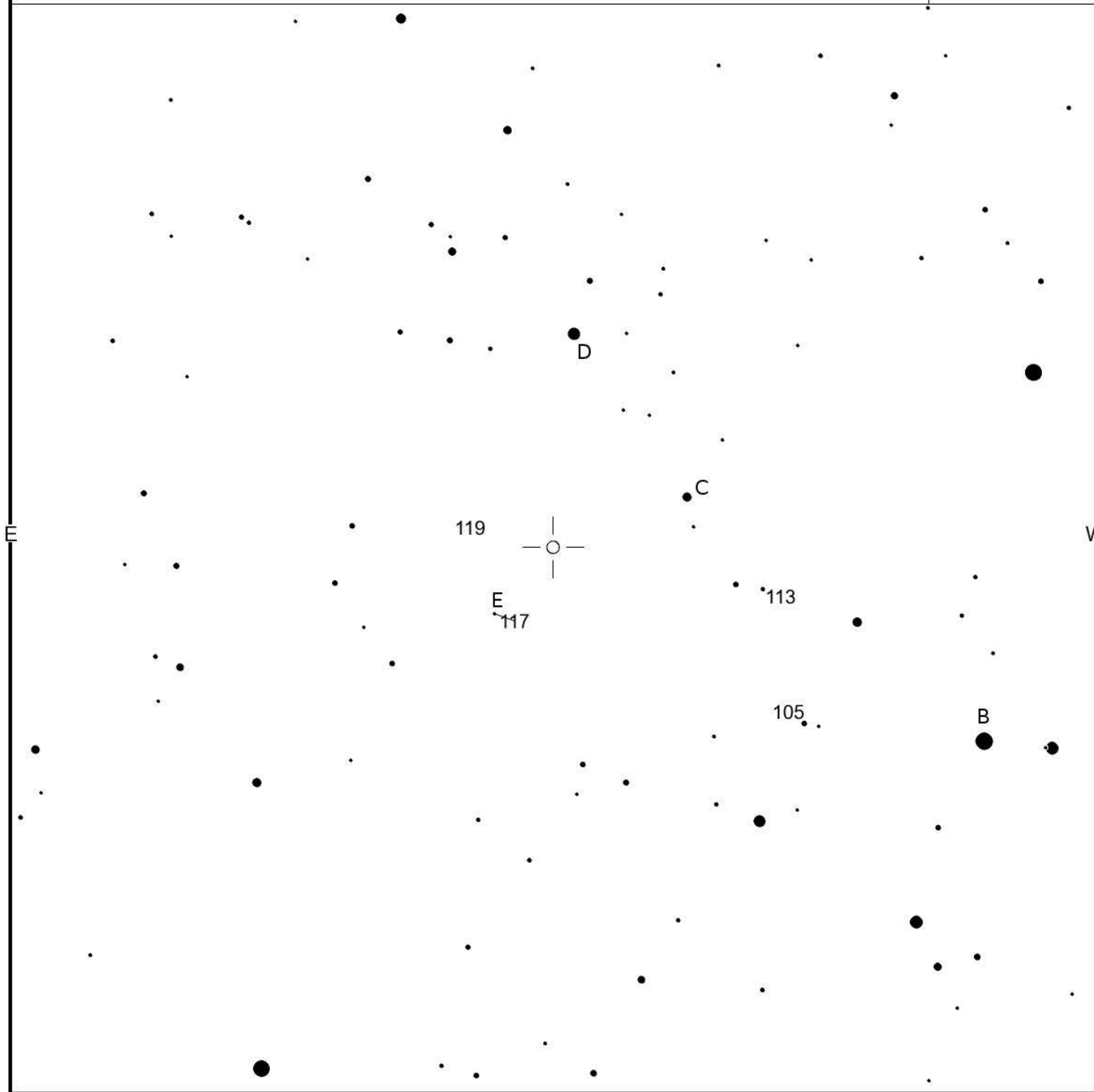
AAVSO  
Chart

5252ajg

N

E

W



FOV = 2.0°

Please use the photometry table for CCD observations.

<http://www.aavso.org/vsp/>

Copyright © 2011 AAVSO

S

PTF11kly

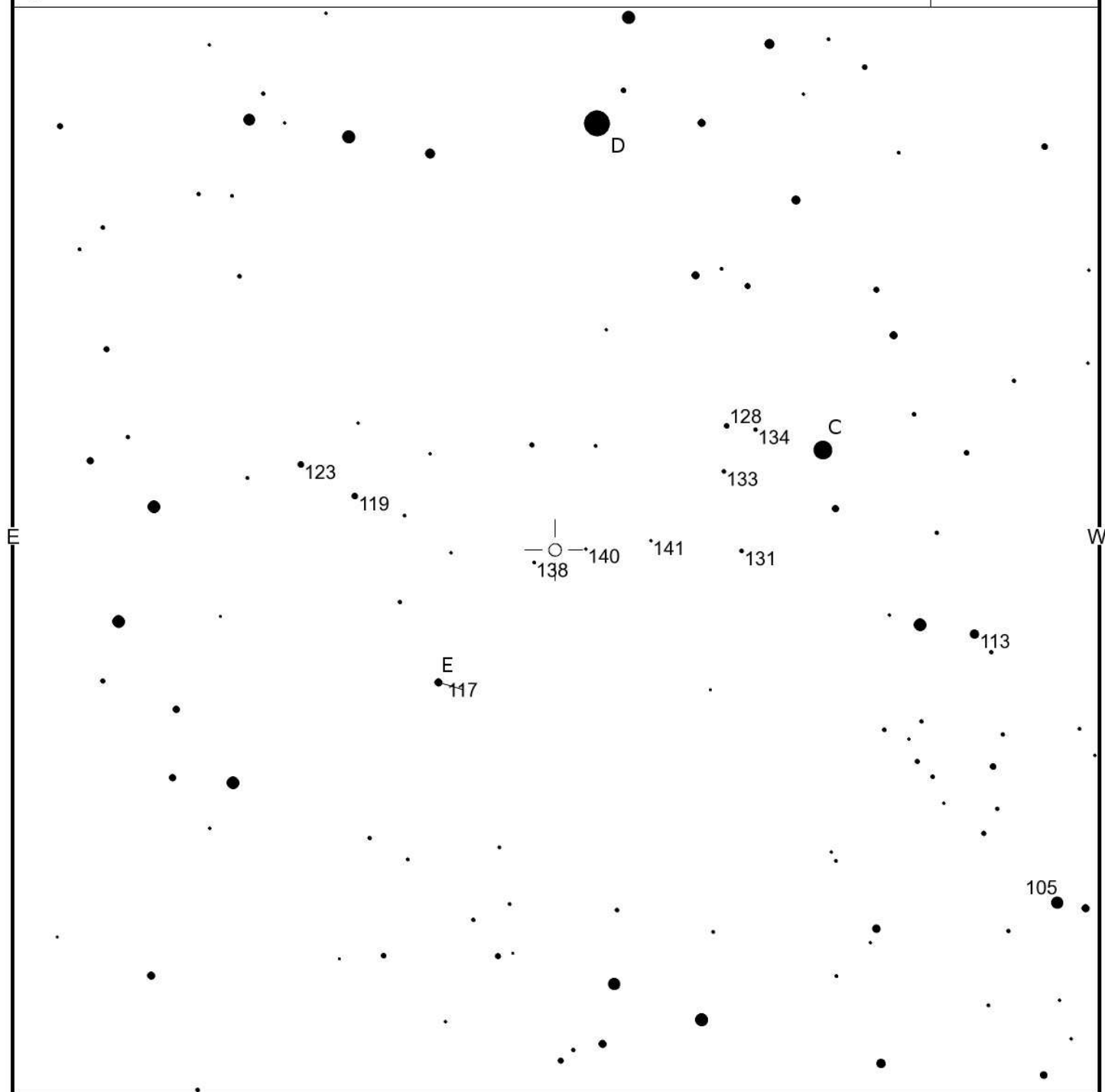
Magn: 0.0 - 0.0  
Period:  
Type: SNIa  
Spec:

# Supernova in M-101

(2000) 14:03:5.81 +54:16:25.4

AAVSO  
Chart

5252ajj



FOV = 1.0°

Please use the photometry table for CCD observations.

PTF11kly

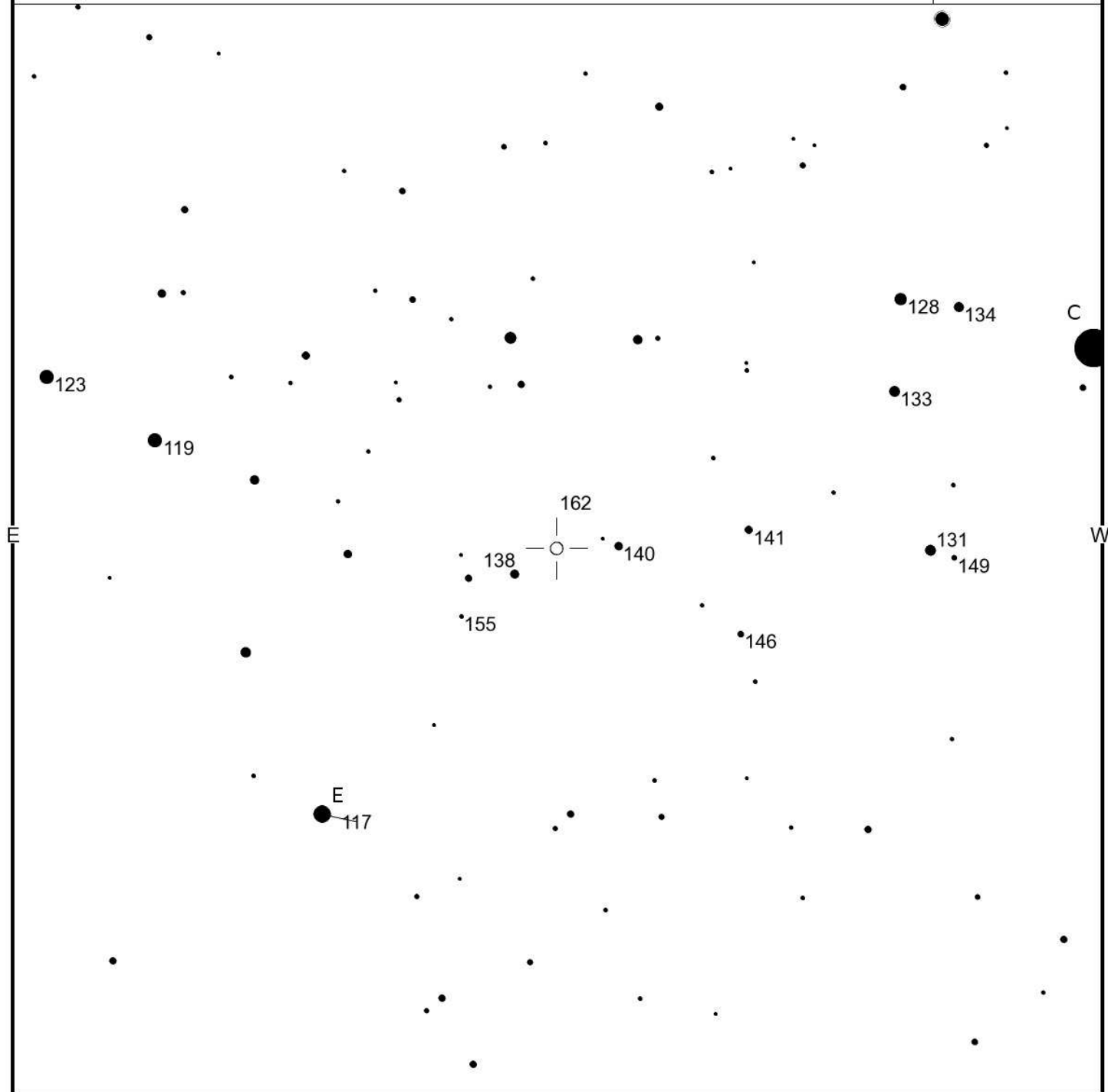
Magn: 0.0 - 0.0  
Period:  
Type: SNIa  
Spec:

# Supernova in M-101

(2000) 14:03:5.81 +54:16:25.4

AAVSO  
Chart

5252ajw



FOV = 30.0'

Please use the photometry table for CCD observations.

<http://www.aavso.org/vsp/>

Copyright © 2011 AAVSO

S

PTF11kly

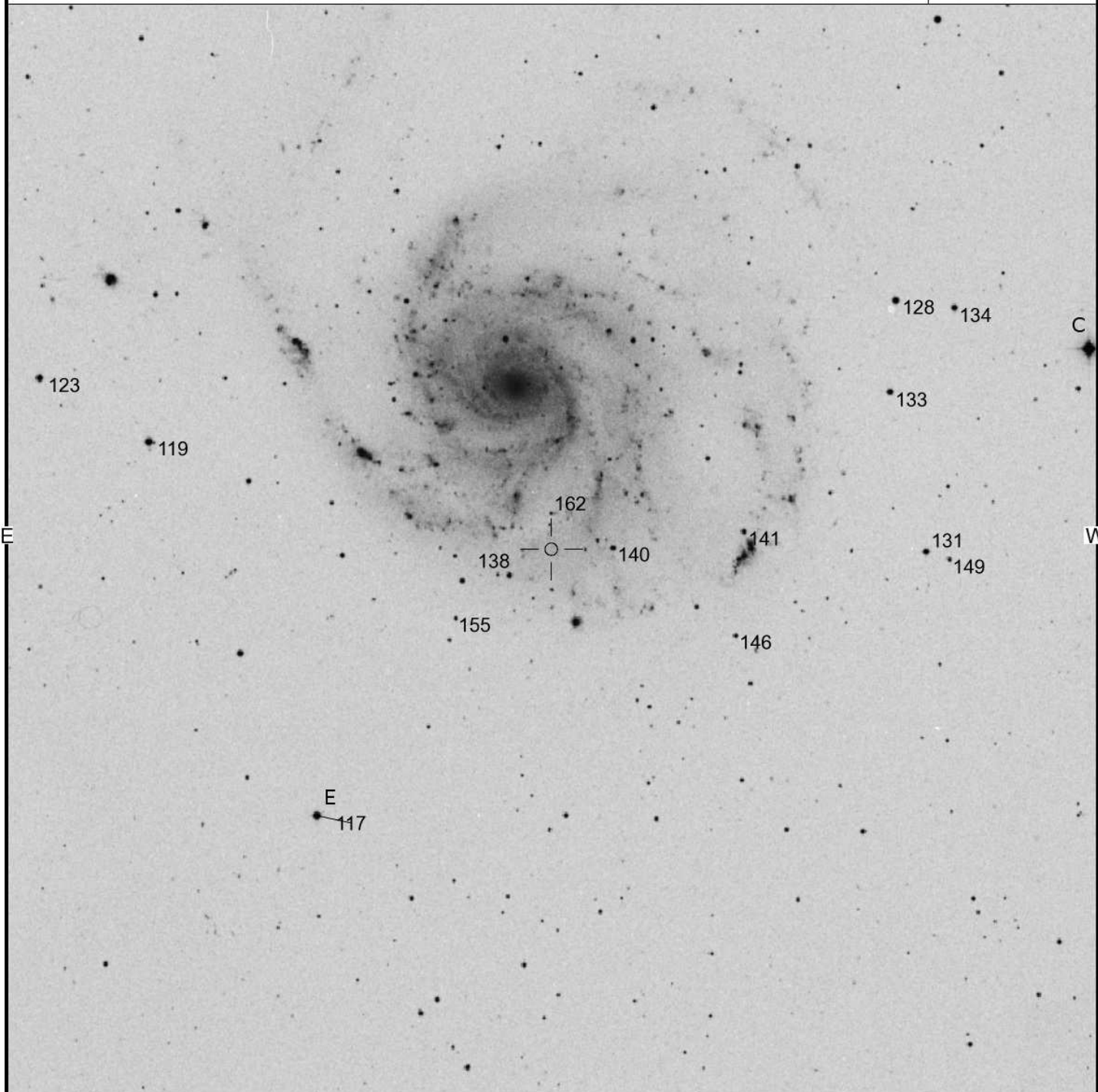
Magn: 0.0 - 0.0  
Period:  
Type: SNIa  
Spec:

# Supernova in M-101

(2000) 14:03:5.81 +54:16:25.4

AAVSO  
Chart

5252ajy



FOV = 30.0'

Please use the photometry table for CCD observations.

<http://www.aavso.org/vsp/>

Copyright © 2011 AAVSO